

<p>Policy Compliance Procedure</p>
--



ACUTE MANAGEMENT OF INFANTS AND CHILDREN WITH ACUTE ABDOMINAL PAIN

This PCP relates to

NSW Health PD	<i>NSW PD2005_384 Children and Infants with Acute Abdominal Pain- Acute Management</i>
PCP number	<i>NSW PD2005_384: PCP 1 Acute management of infants and children with acute abdominal pain</i>

Sites where PCP applies	HNE Northern Rural Referral Hospitals Emergency Departments (ED)
Target audience	Clinicians in ED where children present with abdominal pain
Description	Basic clinical practice guidelines for the management of acute abdominal pain in paediatric patients.
Subject	Management of acute abdominal pain in paediatric patients
Keywords	Management, acute, abdominal pain, children, infants
Related Legislation (including OHS legislation), Australian Standards, NSW Health Policy or Circular, other HNEH Documents, Professional Guidelines, Codes of Practice or Ethics: NSW Health Paediatric Clinical Practice Guidelines	

Portfolio Executive Director responsible for Policy and PCP	Nigel Lyons
---	-------------

Policy Contact Person Details	Helen Stevens, Clinical Nurse Consultant Paediatrics (Northern) HNE Health Phone 6776 9806, 0428 263 809 <i>Alternate Contact:</i> Lucy Bates, Policy Officer - Area Guidelines, Standards and Protocols (Paediatrics) Phone 4939 2469
-------------------------------	---

Summary

This PCP

- is a clinical pathway for use in the assessment and identification of causes of acute abdominal pain in infants and children,
- assists with the identification of appropriate treatment based on clinical assessment and appropriate and timely referral,
- PCP includes relevant fact sheet for parent information.

Distribution:	GENERAL MANAGER, DON, PAEDIATRICIAN, NUM ED, ED PHYSICIAN, DIRECTOR OF MEDICAL SERVICES CYP&FCN STREAM LEADERS
Date PCP authorised:	April 2007
PCP authorised by:	Trish Davidson, Area Director, Kaleidoscope
Date of Issue:	May 2007
PCP Review Due Date:	April 2009
TRIM Number:	08/207-2-1

Hunter New England Area Health Service
PAEDIATRIC ABDOMINAL PAIN MANAGEMENT
IN EMERGENCY DEPARTMENTS (Referral)

Name _____

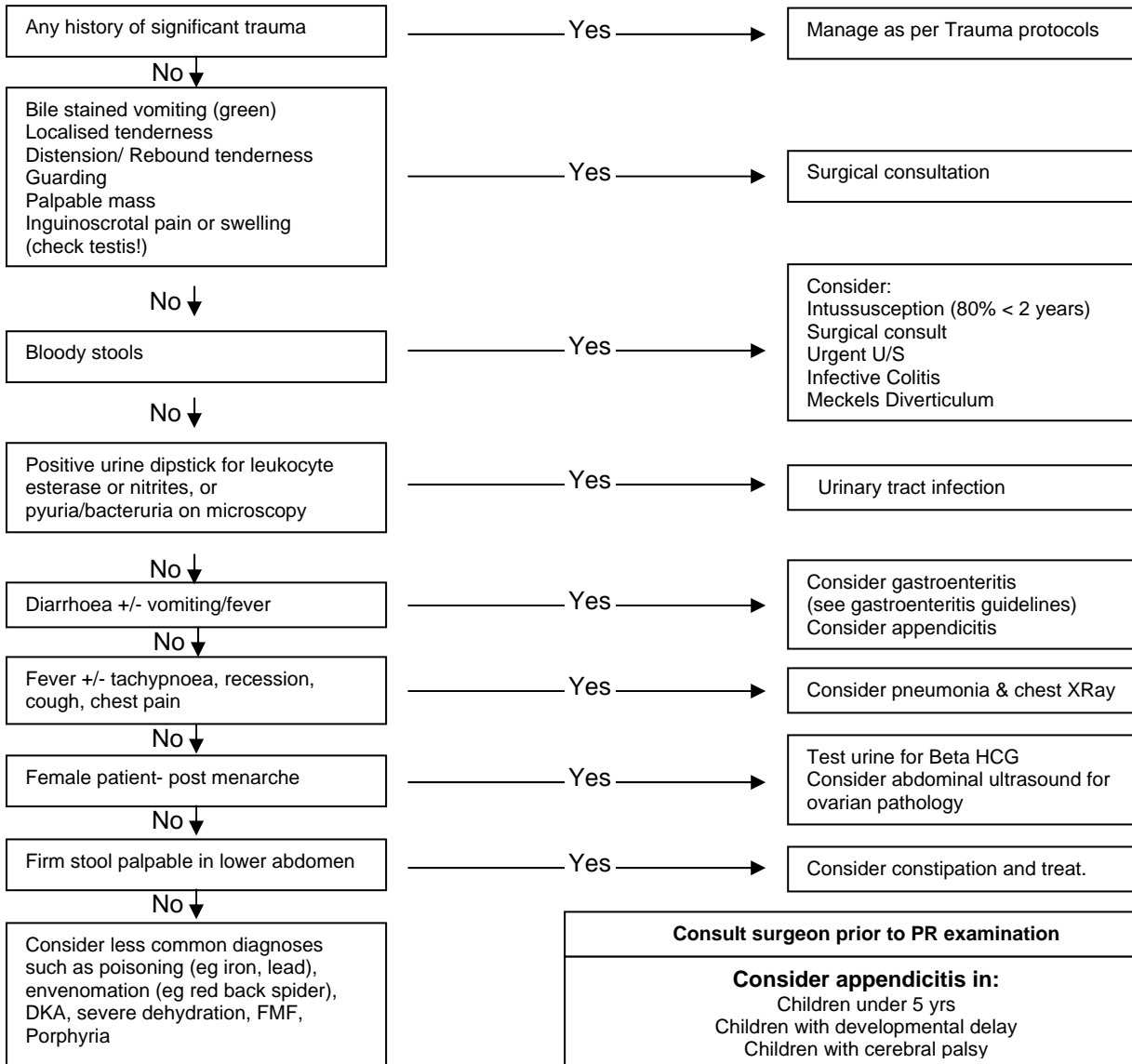
MRN _____

Triage: Date: _____ Time: _____

Presenting Problem: _____

INITIAL ASSESSMENT

Child with Abdominal pain
Remember:
ABCD
Primary survey
Check Blood Glucose
Provide analgesia



If in doubt or confused about a child's condition, signs or symptoms; seek senior medical advice.

Patients with abdominal pain may be discharged home if above flow chart has been adhered to and the patient's pain is settling without the use of narcotics. Parent fact sheet must be provided, and the patient should be advised to return if pain reoccurs.

Name (print) _____ Date: _____ Time: _____